

OIL & GAS INDUSTRIAL BELTS

BANDO

A photograph of an oil pumpjack and industrial towers in a desert setting under a blue sky with white clouds. The pumpjack is painted red and blue, and the towers are blue with red tops. The ground is sandy and there are some utility poles in the background.

**PREMIUM QUALITY
POWER TRANSMISSION V-BELTS**

S I N C E 1 9 0 6

TABLE OF CONTENTS

Power Ace® Combo Aramid V-Belts
 8VK Section03

Power Ace® Combo V-Belts
 8V Section04

Power King® V-Belts
 B Section 05-06
 C Section06

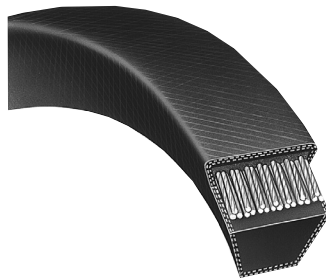
Power King® Combo V-Belts
 C Section07



**POWER ACE® ARAMID COMBO V-BELTS
 POWER ACE® COMBO V-BELTS**

Power Ace® Aramid Combo belts are constructed with high modulus aramid cords to maintain length stability and to withstand severe shock loads, making them ideally suited for oil and gas industry applications. Size listing on page 3.

Power Ace® Combo belts are built to eliminate belt whip, flip over or belts jumping off the sheaves due to shock load, pulsation or misalignment. Size listing on page 4.



POWER KING® B & C CROSS SECTION V-BELTS

Still the most practical, economical, and dependable belts for most drives. Innovations in materials, design, and manufacturing methods help Power King® set the pace for industry's increasing demands for long, trouble-free belt service. Size listing of B section V-belts on pages 5 and 6 and C section V-belts on page 6.



POWER KING® COMBO V-BELTS

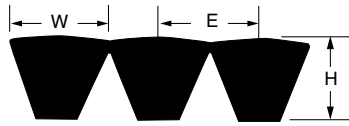
We start with our individual premium quality classical section V-belts, and join them with a tough tie band that when cured, welds the belts together permanently. This tie band assures lateral rigidity and guides the belts into the sheave grooves in a straight line so the belts can't flip over or jump off the sheaves, even under severe shock loads. Size listing on page 7.

All Bando V-belts are oil, heat and ozone resistant to protect the belts' inner components for maximum life service.

Bando V-belts are built to conform with the Rubber Manufacturers Association (RMA) requirements for static conductivity as specified by publication IP-3-3.

BANDO USA, INC., 1149 W BRYN MAWR, ITASCA, IL 60143
 EMAIL: SERVICEEXPRESS@BANDOUSA.COM | OFFICE: 800-829-6612 | FAX: 630-773-6912

BANDO | 2017 PREMIUM V-BELTS FOR OIL & GAS INDUSTRIES



Belt Section	Top Width W (Inches)	Thickness H (Inches)	Pitch Between Belts E (Inches)
8V	1.00	0.98	1.13

ARAMID CORD

POWER ACE® COMBO ARAMID V-BELTS

Belt Number	List 3 Rib	List 4 Rib	List 5 Rib	List 6 Rib	List 8 Rib	List 10 Rib	Weight Rib* (Approx.) Lbs.	Nominal Outside Length (Inches)
8VK1250	652.50	870.00	1087.50	1305.00	1740.00	2175.00	4.98	126
8VK1320	689.04	918.72	1148.40	1378.08	1837.44	2296.80	5.26	133
8VK1400	730.80	974.40	1218.00	1461.61	1948.40	2436.00	5.58	141
8VK1500	783.00	1044.00	1305.00	1566.00	2088.00	2610.00	5.98	151
8VK1600	835.20	1113.60	1392.00	1670.40	2227.20	2784.00	6.38	161
8VK1700	887.40	1183.20	1479.00	1774.80	2366.40	2958.00	6.77	171
8VK1800	939.60	1252.80	1566.00	1879.20	2505.60	3132.00	7.20	181
8VK1900	991.80	1322.40	1653.00	1983.60	2644.80	3306.00	7.60	191
8VK2000	1044.00	1392.00	1740.00	2088.00	2784.00	3480.00	8.00	201
8VK2120	1106.63	1475.52	1844.40	2213.28	2951.04	3688.80	8.60	213
8VK2240	1169.28	1559.04	1948.80	2338.56	3118.08	3897.60	9.00	225
8VK2360	1231.92	1642.56	2054.40	2463.84	3285.12	4108.80	9.40	237
8VK2500	1305.00	1740.00	2175.00	2610.00	3480.00	4350.00	10.00	251
8VK2650	1383.30	1844.40	2305.50	2766.60	3688.80	4611.00	10.60	266
8VK2800	1461.60	1948.80	2346.00	2923.20	3897.60	4872.00	11.40	281
8VK3000	1566.00	2088.00	2610.00	3132.00	4176.00	5220.00	12.20	301
8VK3150	1644.30	2192.40	2740.50	3288.60	4384.80	5481.00	13.00	316
8VK3350	1748.70	2331.60	2914.50	3497.40	4683.20	5829.00	13.60	336
8VK3550	1853.10	2470.80	3088.50	3706.20	4941.60	6177.00	14.00	356
8VK3750	1957.50	2610.00	3262.50	3915.00	5220.00	6525.00	15.20	376
8VK4000	2088.00	2784.00	3480.00	4176.00	5568.00	6960.00	16.20	401
8VK4250	2218.50	2958.00	3697.50	4437.00	5916.00	7395.00	17.20	426
8VK4500	2349.00	3132.00	3915.00	4698.00	6264.00	7830.00	18.20	451
8VK4750	2479.50	3306.00	4132.50	4959.00	6612.00	8265.00	19.20	476
8VK5000	2610.00	3480.00	4350.00	5220.00	6960.00	8700.00	20.20	501
8VK5600	2932.50	3897.00	4872.00	5846.40	7794.00	9744.00	22.80	561

* Weights shown are approximate and in some cases may be calculated. 10 ribs maximum width for 8VK.

Engineering for Pumping Units

Engine (Motor) Sheave Diameter - Unit

Strokes - Engine (Motor) R.P.M.

- Correct Engine (Motor) Sheave Diameter = $USPM \times GR \times PD \div E$
- Unit Strokes Per Minute = $E \times p.d. \div (GR \times PD)$
- Engine (Motor) r.p.m. = $USPM \times GR \times (PD \div p.d.)$

KEY	
Acronym	Meaning
USPM	Unit Strokes Required Per Minute
GR	Unit Internal Gear Ration
PD	Unit V-Belt Sheave Pitch Diameter
E	Engine or Electric Motor Speed (r.p.m.)
p.d.	Engine or Electric Motor Sheave Pitch Diameter
C	Distance between Shaft Centers

POWER ACE® COMBO ARAMID V-BELTS

POWER ACE® COMBO V-BELTS

POWER KING® V-BELTS

POWER KING® COMBO V-BELTS

**POWER ACE® COMBO V-BELTS
ARAMID V-BELTS**

POWER ACE® COMBO V-BELTS

POWER KING® V-BELTS

POWER KING® COMBO V-BELTS

POWER ACE® COMBO V-BELTS - 8V SECTION

Belt Number	List 2 Rib	List 3 Rib	List 4 Rib	List 5 Rib	List 6 Rib	List/Rib Over 6 Rib	Weight Rib* (Approx.) Lbs.	Nominal Outside Length (Inches)
8V1000	225.60	338.40	451.20	564.00	676.80	112.80	3.99	101.00
8V1060	239.04	358.56	478.08	597.60	717.12	119.52	4.22	107.00
8V1120	252.96	379.44	505.92	632.40	758.88	126.48	4.46	113.00
8V1180	266.88	400.32	533.76	667.20	800.64	133.44	4.70	119.00
8V1250	282.72	424.08	565.44	706.80	848.16	141.36	4.98	126.00
8V1320	298.56	447.84	597.12	746.40	895.68	149.28	5.26	133.00
8V1400	316.80	475.20	633.60	792.00	950.40	158.40	5.58	141.00
8V1500	339.84	509.76	679.68	849.60	1019.52	169.92	5.98	151.00
8V1600	362.40	543.60	724.80	906.00	1087.20	181.20	6.38	161.00
8V1700	388.80	583.20	777.60	972.00	1166.40	194.40	6.77	171.00
8V1800	409.92	614.88	819.84	1024.80	1229.76	204.96	7.17	181.00
8V1900	433.44	650.16	866.88	1083.60	1300.32	216.72	7.57	191.00
8V2000	456.96	685.44	913.92	1142.40	1370.88	228.48	7.97	201.00
8V2120	485.28	727.92	970.56	1213.20	1455.84	242.64	8.45	213.00
8V2240	511.68	767.52	1023.36	1279.20	1535.04	255.84	8.92	225.00
8V2360	538.08	807.12	1076.16	1345.20	1614.24	269.04	9.40	237.00
8V2500	569.76	854.64	1139.52	1424.40	1709.28	284.88	9.96	251.00
8V2650	604.32	906.48	1208.64	1510.80	1812.96	302.16	10.56	266.00
8V2800	639.84	959.76	1279.68	1599.60	1919.52	319.92	11.15	281.00
8V3000	685.44	1028.16	1370.88	1713.60	2056.32	342.72	11.95	301.00
8V3150	720.48	1080.72	1440.96	1801.20	2161.44	360.24	12.55	316.00
8V3350	767.04	1150.56	1534.08	1917.60	2301.12	383.52	13.35	336.00
8V3550	812.64	1218.96	1625.08	2031.60	2437.92	406.32	14.14	356.00
8V3750	859.20	1288.80	1718.40	2148.00	2577.60	429.60	14.94	376.00
8V4000	918.72	1378.08	1837.44	2296.80	2756.16	459.36	15.93	401.00
8V4250	978.24	1467.36	1956.48	2445.60	2934.72	489.12	16.93	426.00
8V4500	1037.76	1556.64	2075.52	2594.40	3113.28	518.88	17.93	451.00
8V4750	1097.28	1645.92	2194.56	2743.20	3291.84	548.64	18.92	476.00
8V5000	1156.80	1735.20	2313.60	2892.00	3470.40	578.40	19.92	501.00
8V5600	1299.84	1949.76	2599.68	3249.60	3899.52	649.92	22.31	561.00
8V6000	1392.69	2089.03	2785.37	3481.71	4178.06	696.34	23.90	601.00

Stonizing Procedures

1. Measure the span length (L) in Fig. 1.
2. At the center of the span (L) apply a force perpendicular to the belt measuring the force needed to deflect the belt 1/64" per inch of span length (L).
3. Compare the force required in step 2 to the recommended range(s) in the appropriate table. Tighten or loosen the belt tension to bring the tension into the recommended range.
4. For V-belts, run the drive for five (5) or ten (10) minutes to seat the belt and then recheck the tension.
5. Check belt tension after 24-48 hours to assure that it falls between the maximum and minimum values shown in the table.

V-Belt Cross Section	Small Sheave Diameter Range (Inches)	Recommended Deflection Force (Lbs.)*	
		Initial Installation	Retensioning
			Maximum
B	5.4 - 4.6	8.7	7.5
	5.7 - 7.0	9.3	8.1
	7.1	10.0	8.8
C	9.0	15.0	13.0
	9.1 - 12.0	18.0	16.3
	12.1	19.5	16.9
8V	12.5 - 16.0	39.0*	33.8*
	17.0 - 20.0	45.0*	39.0*
	21.2	51.0*	44.2*
8VK	12.5 - 16.0	62.4*	54.1*
	17.0 - 20.0	72.0*	62.4*
	21.2	81.6*	70.7*

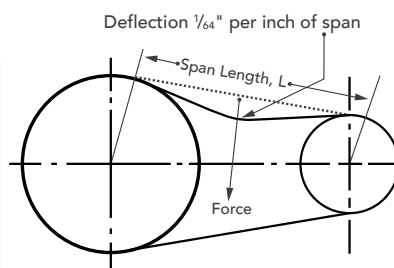


Figure 1

Note: For banded belts, multiply the force in the table by the number of belts in the band.

* 1/2 of this deflection force can be used, but substitute deflection amount of 1/128" per every inch.

Belt Length

$$\text{Belt length} = 2C + 1.57(D + d) + \frac{(D-d)^2}{4C}$$

Where C = center distance
D = large sheave pitch diameter
d = small sheave pitch diameter

Belt Speed

$$V = \frac{PD(\text{rpm})}{3.82} = (PD)(\text{rpm})(.262)$$

Where V = belt speed in feet per minute
PD = pitch diameter of sheave or pulley
RPM = revolutions per minute of the same sheave or pulley

Torque to Horsepower

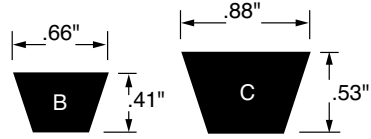
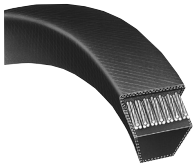
$$\text{Horsepower} = \frac{(\text{Torque, pound-inches})(\text{rpm})}{63,025}$$

$$\text{Horsepower} = \frac{(\text{Torque, pound-feet})(\text{rpm})}{5,252}$$

Useful Conversions

Power (kW) = HP x .7457 Meters x 3.2808 = feet
kW x 1.3405 = HP Inches x 25.40 = mm
mm x 0.0394 = inches Inches x 0.0254 = meters
Meters x 39.3701 = inches

BANDO | 2017 PREMIUM V-BELTS FOR OIL & GAS INDUSTRIES



POWER KING® V-BELTS - B SECTION

Belt Number	Weight* (Approx.) Lbs.	Outside Length (Inches)	Datum Length (Inches)	Belt Number	Weight* (Approx.) Lbs.	Outside Length (Inches)	Datum Length (Inches)
B25	0.26	28.00	26.80	B90	0.95	93.00	91.80
B26	0.27	29.00	27.80	B91	0.96	94.00	92.80
B27	0.28	30.00	28.80	B92	0.97	95.00	93.80
B28	0.30	31.00	29.80	B93	0.98	96.00	94.80
B29	0.31	32.00	30.80	B94	0.99	97.00	95.80
B30	0.32	33.00	31.80	B95	1.00	98.00	96.80
B31	0.33	34.00	32.80	B96	1.01	99.00	97.80
B32	0.34	35.00	33.80	B97	1.02	100.00	98.80
B33	0.35	36.00	34.80	B98	1.03	101.00	99.80
B34	0.36	37.00	35.80	B99	1.04	102.00	100.80
B35	0.37	38.00	36.80	B100	1.05	103.00	101.80
B36	0.38	39.00	37.80	B101	1.06	104.00	102.80
B37	0.39	40.00	38.80	B102	1.07	105.00	103.80
B38	0.40	41.00	39.80	B103	1.08	106.00	104.80
B39	0.41	42.00	40.80	B104	1.09	107.00	105.80
B40	0.42	43.00	41.80	B105	1.10	108.00	106.80
B41	0.43	44.00	42.80	B106	1.11	109.00	107.80
B42	0.44	45.00	43.80	B107	1.13	110.00	108.80
B43	0.45	46.00	44.80	B108	1.14	111.00	109.80
B44	0.46	47.00	45.80	B110	1.16	113.00	111.80
B45	0.47	48.00	46.80	B111	1.17	114.00	112.80
B46	0.48	49.00	47.80	B112	1.18	115.00	113.80
B47	0.49	50.00	48.80	B114	1.20	117.00	115.80
B48	0.51	51.00	49.80	B115	1.21	118.00	116.80
B49	0.52	52.00	50.80	B116	1.22	119.00	117.80
B50	0.53	53.00	51.80	B117	1.23	120.00	118.80
B51	0.54	54.00	52.80	B118	1.24	121.00	119.80
B52	0.55	55.00	53.80	B120	1.26	123.00	121.80
B53	0.56	56.00	54.80	B122	1.28	125.00	123.80
B54	0.57	57.00	55.80	B123	1.29	126.00	124.80
B55	0.58	58.00	56.80	B124	1.30	127.00	125.80
B56	0.59	59.00	57.80	B126	1.33	129.00	127.80
B57	0.60	60.00	58.80	B128	1.35	131.00	129.80
B58	0.61	61.00	59.80	B130	1.36	133.00	131.80
B59	0.62	62.00	60.80	B131	1.38	134.00	132.80
B60	0.63	63.00	61.80	B133	1.40	136.00	134.80
B61	0.64	64.00	62.80	B134	1.41	137.00	135.80
B62	0.65	65.00	63.80	B135	1.42	138.00	136.80
B63	0.66	66.00	64.80	B136	1.43	139.00	137.80
B64	0.67	67.00	65.80	B137	1.44	140.00	138.80
B65	0.68	68.00	66.80	B138	1.45	141.00	139.80
B66	0.69	69.00	67.80	B140	1.47	143.00	141.80
B67	0.71	70.00	68.80	B141	1.49	144.00	142.80
B68	0.72	71.00	69.80	B142	1.50	145.00	143.80
B69	0.73	72.00	70.80	B144	1.52	147.00	145.80
B70	0.74	73.00	71.80	B147	1.55	150.00	148.80
B71	0.75	74.00	72.80	B148	1.56	151.00	149.80
B72	0.76	75.00	73.80	B150	1.58	153.00	151.80
B73	0.77	76.00	74.80	B152	1.60	155.00	153.80
B74	0.78	77.00	75.80	B153	1.61	156.00	154.80
B75	0.79	78.00	76.80	B154	1.62	157.00	155.80
B76	0.80	79.00	77.80	B156	1.64	159.00	157.80
B77	0.81	80.00	78.80	B158	1.66	161.00	159.80
B78	0.82	81.00	79.80	B160	1.68	163.00	161.80
B79	0.83	82.00	80.80	B162	1.70	165.00	166.30
B80	0.84	83.00	81.80	B165	1.73	168.00	165.80
B81	0.85	84.00	82.80	B168	1.77	171.00	169.80
B82	0.86	85.00	83.80	B170	1.79	173.00	171.80
B83	0.87	86.00	84.80	B172	1.81	175.00	173.80
B84	0.88	87.00	85.80	B173	1.82	176.00	174.80
B85	0.89	88.00	86.80	B175	1.84	178.00	176.80
B86	0.91	89.00	87.80	B180	1.89	183.00	181.80
B87	0.92	90.00	88.80	B185	1.95	188.00	186.80
B88	0.93	91.00	89.80	B190	2.00	193.00	191.80
B89	0.94	92.00	90.80	B195	2.05	198.00	196.80

*Weights shown are approximate and in some cases may be calculated.
For intermediate sizes not shown, consult Bando for availability and price.

POWER ACE® COMBO
ARAMID V-BELTS

POWER ACE® COMBO V-BELTS

POWER KING® V-BELTS

POWER KING®
COMBO V-BELTS

BANDO | 2017 PREMIUM V-BELTS FOR OIL & GAS INDUSTRIES

POWER KING® V-BELTS - B SECTION (CONTINUED)

Belt Number	Weight* (Approx.) Lbs.	Outside Length (Inches)	Datum Length (Inches)	Belt Number	Weight* (Approx.) Lbs.	Outside Length (Inches)	Datum Length (Inches)
B205	2.16	208.00	206.8	B290	3.05	291.00	290.3
B206	2.17	209.00	207.8	B292	3.07	293.00	292.3
B210	2.21	213.00	211.8	B293	3.08	294.00	293.3
B224	2.35	225.00	224.3	B300	3.16	301.00	300.3
B225	2.37	226.00	225.3	B315	3.31	316.00	315.3
B237	2.49	238.00	237.3	B330	3.35	331.00	330.3
B238	2.50	239.00	238.3	B345	3.62	346.00	345.3
B240	2.53	241.00	240.3	B360	3.81	361.00	360.3
B255	2.68	256.00	255.3	B433	4.42	434.00	433.3
B270	2.84	271.00	270.3	B472	4.97	473.00	472.3
B285	3.00	286.00	285.3				

POWER KING® V-BELTS - C SECTION

Belt Number	Weight* (Approx.) Lbs.	Outside Length (Inches)	Datum Length (Inches)	Belt Number	Weight* (Approx.) Lbs.	Outside Length (Inches)	Datum Length (Inches)
C38	0.68	42.00	40.90	C117	2.10	121.00	119.90
C42	0.75	46.00	44.90	C118	2.12	122.00	120.90
C50	0.82	54.00	52.90	C120	2.16	124.00	122.90
C51	0.92	55.00	53.90	C122	2.17	126.00	124.90
C53	0.95	57.00	55.90	C124	2.23	128.00	126.90
C54	0.96	58.00	56.90	C125	2.25	129.00	127.90
C55	0.99	59.00	57.90	C126	2.26	130.00	128.90
C56	0.99	60.00	58.90	C128	2.30	132.00	130.90
C57	1.02	61.00	59.90	C130	2.34	134.00	132.90
C58	1.05	62.00	60.90	C131	2.35	135.00	133.90
C59	1.07	63.00	61.90	C132	2.37	136.00	134.90
C60	1.08	64.00	62.90	C135	2.43	139.00	137.90
C62	1.11	66.00	64.90	C136	2.44	140.00	138.90
C64	1.15	68.00	66.90	C140	2.52	144.00	142.90
C65	1.17	69.00	67.90	C141	2.53	145.00	143.90
C68	1.22	72.00	70.90	C144	2.59	148.00	146.90
C70	1.26	74.00	72.90	C147	2.64	151.00	149.90
C71	1.28	75.00	73.90	C148	2.66	152.00	150.90
C72	1.29	76.00	74.90	C150	2.70	154.00	152.90
C73	1.31	77.00	75.90	C151	2.71	155.00	153.90
C75	1.35	79.00	77.90	C152	2.73	156.00	154.90
C76	1.37	80.00	78.90	C156	2.80	160.00	158.90
C78	1.40	82.00	80.90	C158	2.84	162.00	160.90
C79	1.43	83.00	81.90	C160	2.85	164.00	162.90
C80	1.45	84.00	82.90	C161	2.86	165.00	163.90
C81	1.46	85.00	83.90	C162	2.91	166.00	164.90
C82	1.47	86.00	84.90	C169	3.04	173.00	171.90
C83	1.49	87.00	85.90	C170	3.06	174.00	172.90
C84	1.51	88.00	86.90	C173	3.11	177.00	175.90
C85	1.53	89.00	87.90	C175	3.15	179.00	177.90
C86	1.55	90.00	88.90	C177	3.18	181.00	179.90
C87	1.56	91.00	89.90	C180	3.24	184.00	182.90
C89	1.60	93.00	91.90	C185	3.32	189.00	187.90
C90	1.62	94.00	92.90	C186	3.34	190.00	188.90
C91	1.64	95.00	93.90	C187	3.35	191.00	189.90
C93	1.67	97.00	95.90	C190	3.41	194.00	192.90
C94	1.68	98.00	96.90	C195	3.50	199.00	197.90
C95	1.71	99.00	97.90	C206	3.70	210.00	208.90
C96	1.73	100.00	98.90	C208	3.73	212.00	210.90
C97	1.74	101.00	99.90	C210	3.77	214.00	212.90
C98	1.76	102.00	100.90	C220	3.95	224.00	222.90
C99	1.78	103.00	101.90	C225	4.04	227.00	225.90
C100	1.80	104.00	102.90	C240	4.31	242.00	240.90
C103	1.85	107.00	105.90	C255	4.58	257.00	255.90
C104	1.87	108.00	106.90	C270	4.85	272.00	270.90
C105	1.89	109.00	107.90	C285	5.12	287.00	285.90
C106	1.91	110.00	108.90	C300	5.39	302.00	300.90
C107	1.92	111.00	109.90	C315	5.66	317.00	315.90
C108	1.94	112.00	110.90	C330	5.93	332.00	330.90
C109	1.96	113.00	111.90	C345	6.20	347.00	345.90
C110	1.98	114.00	112.90	C360	6.47	362.00	360.90
C111	2.00	115.00	113.90	C390	7.01	392.00	390.90
C112	2.01	116.00	114.90	C420	7.55	422.00	420.90
C115	2.07	119.00	117.90	C450	8.09	452.00	450.90
C116	2.08	120.00	118.90	C480	8.63	482.00	480.90

*Weights shown are approximate and in some cases may be calculated.
For intermediate sizes not shown, consult Bando for availability and price.

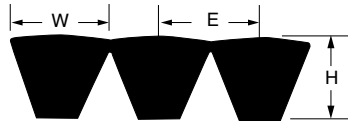
POWER ACE® COMBO ARAMID V-BELTS

POWER ACE® COMBO V-BELTS

POWER KING® V-BELTS

POWER KING® COMBO V-BELTS

BANDO | 2017 PREMIUM V-BELTS FOR OIL & GAS INDUSTRIES



Belt Section	Top Width W (Inches)	Thickness H (Inches)	Pitch Between Belts E (Inches)
C	0.88	0.63	1.00

POWER KING® COMBO V-BELTS - C SECTION

Belt Number	List 2 Rib	List 3 Rib	List 4 Rib	List 5 Rib	List 6 Rib	List/Rib Over 6 Ribs	Weight Rib* (Approx.) Lbs.	Outside Length (Inches)	Datum Length (Inches)
C85	73.14	115.02	146.27	182.84	219.41	36.57	2.41	89.88	87.90
C90	77.44	116.16	154.88	193.59	232.31	38.72	2.55	94.88	92.90
C96	82.60	123.90	165.20	206.50	247.80	41.30	2.72	100.88	98.90
C100	86.02	129.03	172.04	215.05	258.06	43.01	2.83	104.88	102.90
C105	90.24	135.36	180.48	225.60	270.78	45.12	2.97	109.88	107.90
C108	92.64	138.96	185.28	231.60	277.92	46.32	3.05	112.88	110.90
C109	93.52	140.28	187.04	233.80	280.56	46.76	3.08	113.88	111.90
C112	96.00	144.00	192.00	240.00	288.00	48.00	3.16	116.88	114.90
C120	102.72	154.08	205.44	256.80	308.16	51.36	3.39	124.88	122.90
C123	105.28	157.92	210.56	263.20	315.84	52.64	3.47	127.88	125.90
C124	106.00	159.00	212.00	265.00	318.00	53.00	3.50	128.88	126.90
C126	107.74	161.61	215.48	269.35	323.22	53.87	3.56	130.88	128.90
C128	109.44	164.16	218.88	273.60	328.32	54.72	3.62	132.88	130.90
C136	115.60	173.40	231.20	289.00	346.80	57.80	3.84	140.88	138.90
C144	122.88	184.32	245.76	307.20	368.64	61.44	4.07	148.88	146.90
C158	134.40	201.60	268.80	336.00	403.20	67.20	4.46	162.88	160.90
C162	137.28	205.92	274.56	343.20	411.84	68.64	4.58	166.88	164.90
C173	146.88	220.32	293.76	367.20	440.64	73.44	4.89	177.88	175.90
C180	153.60	230.40	307.20	384.00	460.80	76.80	5.08	184.88	182.90
C195	166.08	249.12	332.16	415.20	498.24	83.04	5.51	199.88	197.90
C210	179.52	269.28	359.04	448.80	538.56	89.76	5.93	214.88	212.90
C225	190.36	285.54	380.72	475.90	571.08	95.18	6.35	227.88	225.90
C230	193.20	289.80	386.40	483.00	579.60	96.60	6.49	232.88	230.90
C240	201.60	302.40	403.20	504.00	604.80	100.80	6.78	242.88	240.90
C255	215.60	323.40	431.20	539.00	646.80	107.80	7.20	257.88	255.90
C270	227.52	341.28	455.04	568.80	682.56	113.76	7.62	272.88	270.90
C285	240.08	360.12	480.16	600.20	720.24	120.04	8.05	287.88	285.90
C300	252.48	378.72	504.96	631.20	757.44	126.24	8.47	302.88	300.90
C315	264.96	397.44	529.92	662.40	794.88	132.48	8.89	317.88	315.90
C330	277.44	416.16	554.88	693.60	832.32	138.72	9.32	332.88	330.90
C345	289.92	434.88	579.84	724.80	869.76	144.96	9.74	347.88	345.90
C360	302.40	453.60	604.80	756.00	907.20	151.20	10.17	362.88	360.90
C375	315.70	473.55	631.40	789.25	947.10	157.85	10.59	377.88	375.90
C390	328.32	492.48	656.64	820.80	984.96	164.16	11.01	392.88	390.90
C420	354.24	531.36	708.48	885.60	1062.72	177.12	11.86	422.88	420.90

POWER ACE® COMBO ARAMID V-BELTS

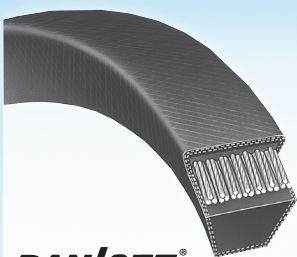
POWER ACE® COMBO V-BELTS

POWER KING® V-BELTS

POWER KING® COMBO V-BELTS

*Weights shown are approximate and in some cases may be calculated. For intermediate sizes not shown, consult Bando for availability and price.

WORLD-WIDE MANUFACTURING • WORLD CLASS QUALITY



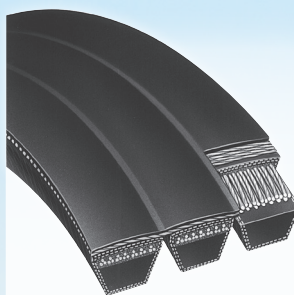
BAN/SET

Power King®

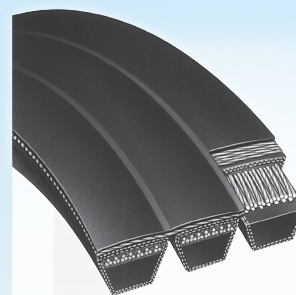


BAN/SET

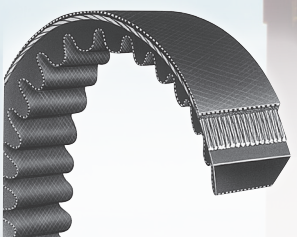
Power Ace® Narrow



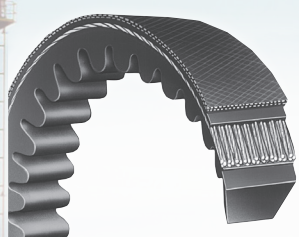
Power King® Combo



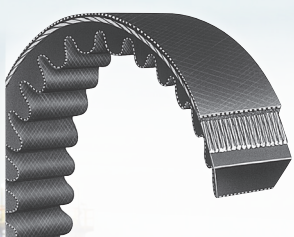
Power Ace®
Aramid Combo
Power Ace® Combo



Power Max®



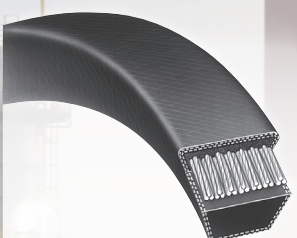
Power King® Cog



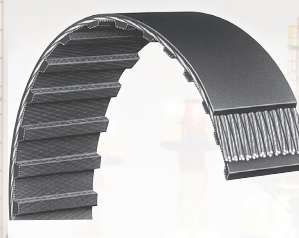
Power Ace® Cog



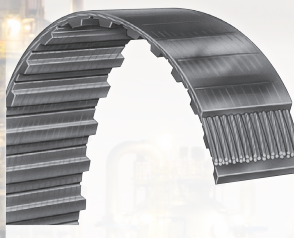
Double V



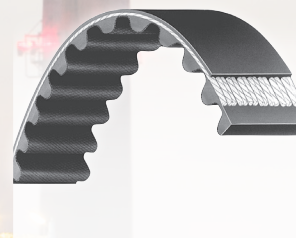
Duraflex GL®



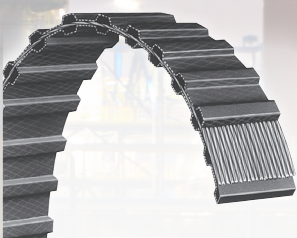
Synchro-Link® Rubber



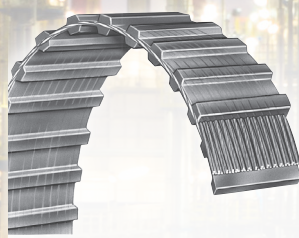
Synchro-Link®
Polyurethane



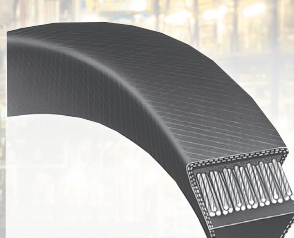
Synchro-Link®
High Torque



Synchro-Link®
Double-Sided
Rubber



Synchro-Link®
Double-Sided
Polyurethane



Metric V-Belts



KPS
High Torque
Polyurethane

BAN/SET System eliminates matching requirements.

BANDO USA, INC., 1149 W BRYN MAWR, ITASCA, IL 60143

EMAIL: SERVICEEXPRESS@BANDOUSA.COM

OFFICE: 800-829-6612 | FAX: 630-773-6912

BUI 1011

BANDO