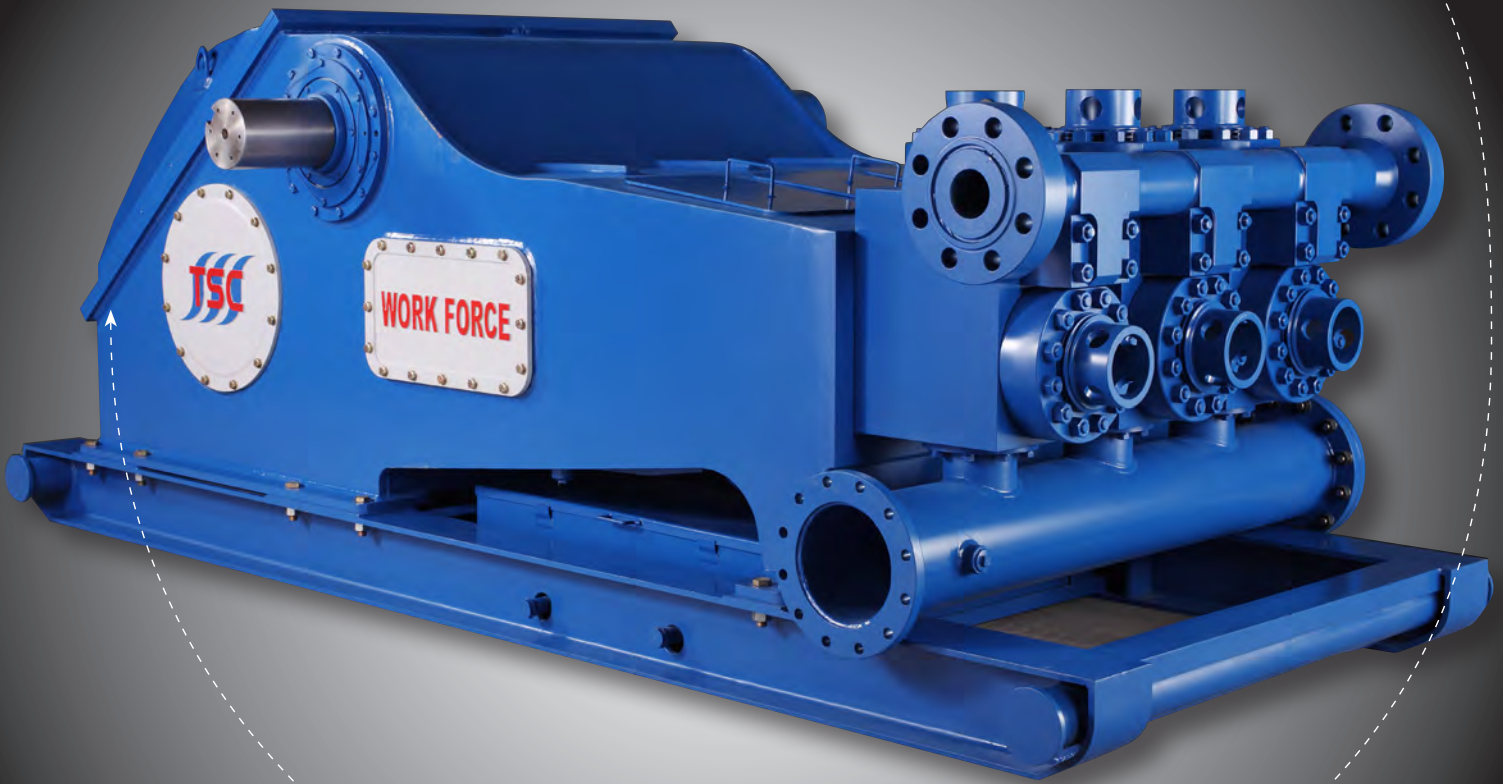


*WORKFORCE TRIPLEX PUMP*  
**WORKFORCE™ WF1500BH 7500PSI Triplex Pump**  
*WORKFORCE TRIPLEX PUMP*



**GLOBAL SOLUTIONS**

DESIGNING, MANUFACTURING AND PACKAGING FOR THE OFFSHORE INDUSTRY

# WORKFORCE™ WF1500BH

## Longer Wells, More Pressure? We Deliver.

We understand the demand drilling contractors are facing with increased pressure and longer well plans. Horsepower and pump loads are increasing, and we are listening.

With most AC Drives and new Tier 4 engine designs, we've responded with the WF1500 pump to optimize today's power choices. Available in both the new WF1500, and as an upgrade to our existing WF1300 mud pump - delivering even more performance and value from our industry-proven Workforce platform.

Whether running 1350hp or 1500hp input power, our new Workforce WF1500 is specifically upgraded to deliver the increased rod and torque loads needed for today's well plans—with Workforce's proven reputation and performance in the market.



The Workforce WF1500BH is an ultra compact, lightweight, harmonically balanced, high performance design resulting in quiet, low vibration, lower operating and transport costs, with an industry leading power to weight ratio.

### Performance Characteristics

WF1500BH Performance Chart					Input HP	807	923	1038	1154	1269	1384	1500
					Input TQ (ft/lbs)	12965	12961	12971	12978	12974	12971	12976
Liner Size	Max Discharge Pressure				Pinion RPM	327	374	420	467	514	560	607
	7500 PSI Fluid Ends		5000 PSI Fluid Ends		Strokes Per Minute	70	80	90	100	110	120	130
	PSI	MPa	PSI	MPa								
4 1/2	7500	51.7	5000	34.5	LPM	601	688	771	858	945	1032	1115
					(GPM)	159	182	204	227	250	273	295
4 3/4	7033	48.5	5000	34.5	LPM	670	766	861	957	1053	1148	1244
					(GPM)	177	203	228	253	278	304	329
5	6346	43.8	5000	34.5	LPM	741	847	953	1058	1168	1274	1380
					(GPM)	196	224	252	280	309	337	365
5 1/2	5245	36.2	5000	34.5	LPM	900	1028	1153	1281	1410	1538	1667
					(GPM)	238	272	305	339	373	407	441
6	4407	30.4	4407	30.4	LPM	1070	1221	1376	1527	1678	1833	1985
					(GPM)	283	323	364	404	444	485	525
6 1/2	3755	25.9	3755	25.9	LPM	1255	1433	1614	1792	1969	2151	2328
					(GPM)	332	379	427	474	521	569	616

Data is based on 90% mechanical efficiency and 100% volumetric efficiency. Achievable pressure is limited to input power and fluid end pressure rating.

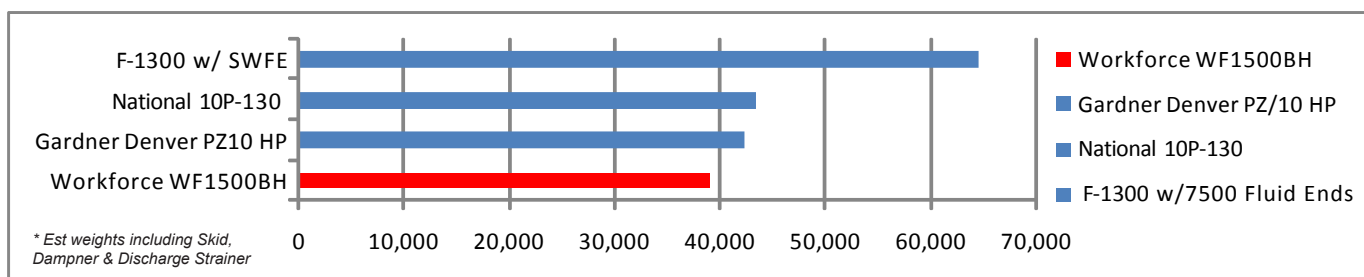
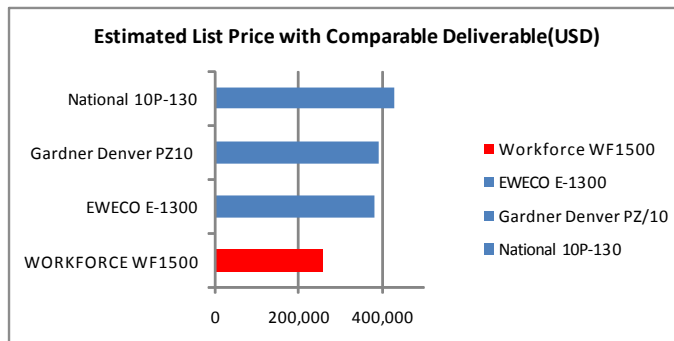
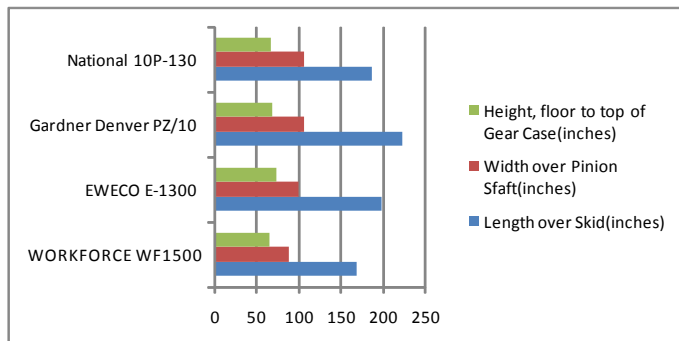


TSC Offshore, Houston, Texas 77086, USA  
 T: +1 832 456 3900 E: sales@tscoffshore.com  
 Visit our Website at www.tscoffshore.com

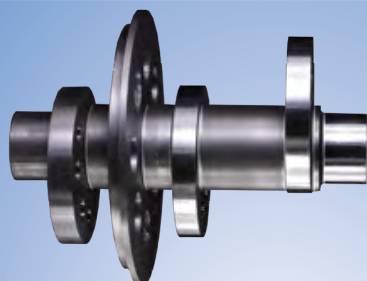
CW Industrial, Alberta Canada  
 T: +1 780 986 9695  
 E: sales@cw-industrial.net



## Why Choose **WORKFORCE™**?



Forged, balanced, and heat treated alloy Steel **Crankshaft** delivers maximum service life. Bolted components allow for easy repairs and optimal sustainability.



Premium SKF, Timken or equivalent **Bearings** with minimum L10 life of 26,000 hours at rated load.



Double-reinforced, 50 Kip high strength, stress relieved, alloy-steel **Pump Frame** provides rigidity where its needed and longevity where its wanted. Heat treatment after fabrication removes residual stress and prevents distortion after final machining.

Upgraded, Forged high strength alloy steel ANSI 4340, double helix **Gear** machined to **AGMA 10** & provide longer service life and stronger resistance against chipping under continuous load.



**Lightweight**, API-6 7500psi Valve over Valve fluid ends. Our Modules are **hardened** and **heat-treated** for increase wear life, wear rings included.



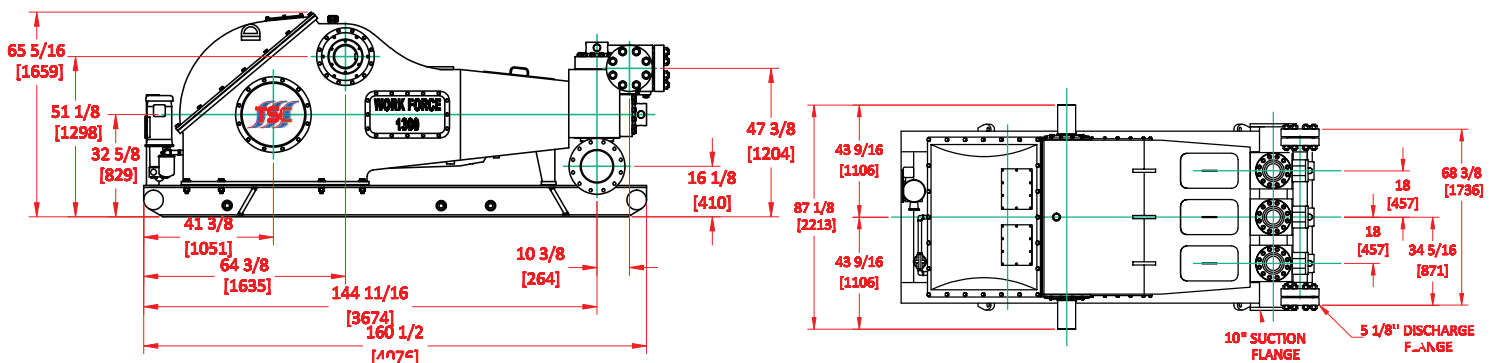
Upgraded, forged **Pinion** shaft with machined gear made from high strength **ANSI 4340** steel forging for enhanced rigidity and service life.



## Specifications

Nominal Input Horsepower:	1,500
Maximum Continuous Pinion Torque:	12,976 lb-ft
Maximum Continuous Pinion RPM:	607
Maximum strokes per minute:	130
Stroke length:	11 inches
Maximum Piston Diameter:	6.5 inch @ 3755 PSI (22.4 MPa)
Minimum Piston Diameter:	4-1/2 inch @ 7500 PSI (51.7 MPa)
Suction Manifold:	10 inch with 150 PSI flanges
Discharge Manifold:	5-1/8 inch with 10,000 PSI flange
Pump Weight: (Complete - Including Skid, Dampner, Lube/Liner System, 5 Way Discharge Strainer)	38,780 lbs (17,627 kg)

## Dimensions/Footprint



## Standard Equipment

- Compact footprint with high horsepower-to-weight ratio
- Alloy steel fluid end with API standard Valves and seats
- 26,000 hours minimum bearing L10 life
- Forged, High Strength AGMA 10 Gear Set
- Rigid fabricated pump frame and skid
- Fabricated high-strength alloy steel eccentric core
- High-strength alloy steel in all drive components
- Cast cross heads and guides
- Electric external Lubrication pump
- Electric liner wash pump
- 7500psi Valve over Valve style fluid ends
- 7500psi K-20 Hydril Style Pulsation Dampener
- 7500psi 5 Way Strainer Cross Block

## Optional Equipment

- CPV Pressure Relief Valve
- Charge Free Dampener Upgrade
- Drive Sheaves
- Kevlar Belts
- Pressure gauge
- TSC Pre-Charge pump units
- Suction Dampener
- Custom skids
- Motor starters in explosion-proof enclosure
- Mechanically-driven external lube pumps